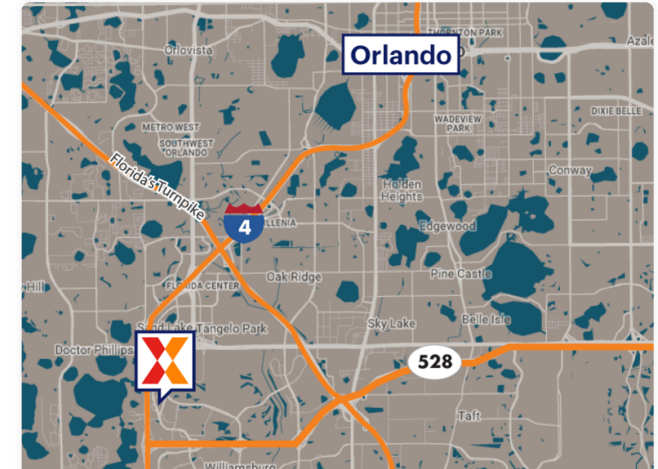
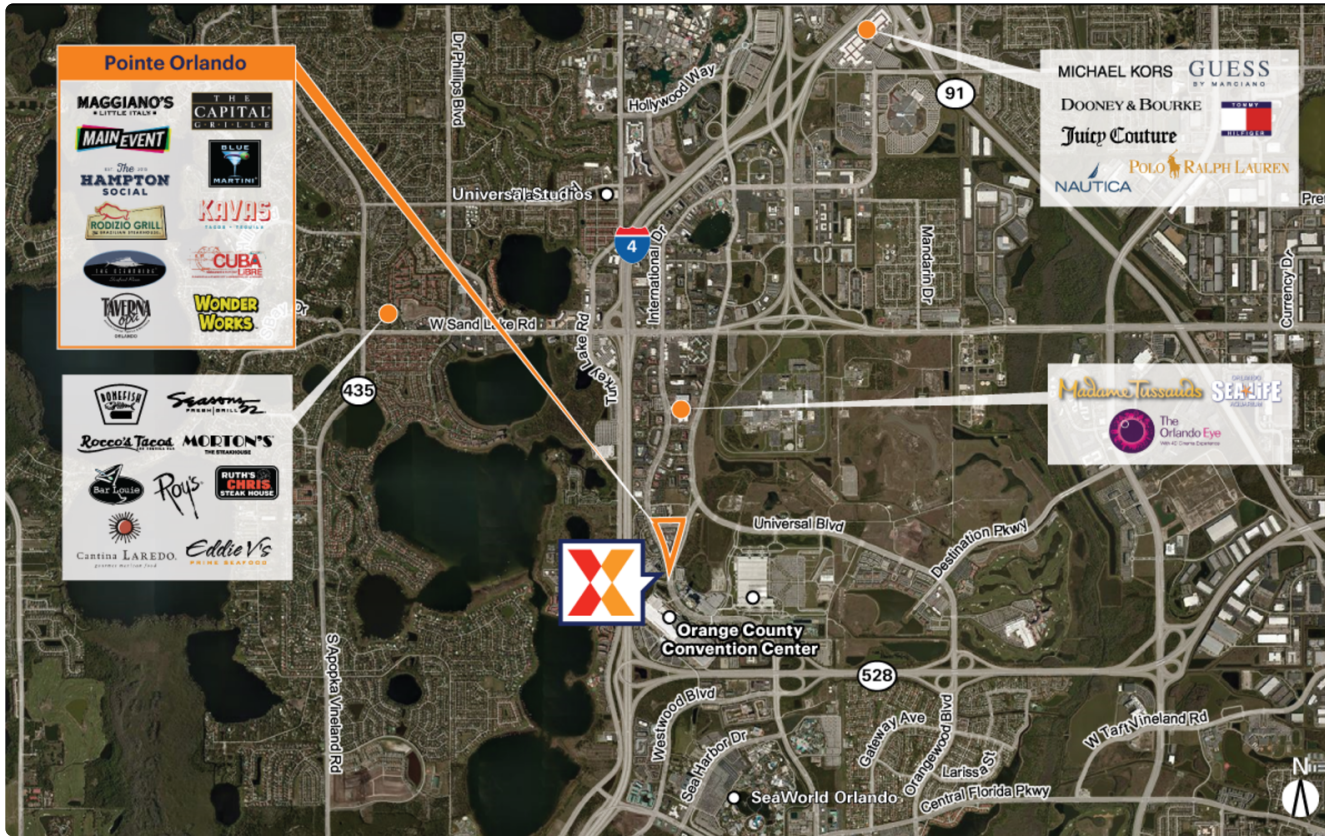


Pointe Orlando

9101 International Drive | Orlando, FL 32819

Orange County Orlando-Kissimmee-Sanford, FL 413,887 Sq Ft

28.4328, -81.4701



| Demographics | 1 Mile | 3 Miles | 5 Miles |
|--------------|-----------|-----------|-----------|
| Population | 2,256 | 51,035 | 177,796 |
| Daytime Pop. | 20,318 | 153,604 | 378,463 |
| Households | 1,010 | 20,667 | 66,666 |
| Income | \$164,537 | \$152,789 | \$124,708 |

Source: Synergos Technologies, Inc. 2024

www.pointeorlando.com

\$41M center redevelopment, adding Hampton Social, Kavaz Tacos & Tequila and four Cordish concepts, completed in 2024, plus an additional \$38M redevelopment currently underway with completion scheduled for 2026

Located in the heart of Orlando's tourist district International Drive and only three miles from Universal Studios, two miles from SeaWorld, and seven miles from Walt Disney World

Adjacent to the Orange County Convention Center, the second largest convention facility in the U.S., drawing 1.5M attendees each year (OCCC 2025) and surrounded by 125+ hotels and resorts (I-Drive District 2024)

Home to Live! at The Pointe, opened in 2024, featuring nationally acclaimed venues like Sports & Social and PBR Cowboy Bar, as well as local favorites such as Sal's Pizza, Still Lounge, Shark Bar, and Palm Tree Club

Features a variety of high-volume dining and entertainment concepts, many of which rank among the top six most-visited chain locations nationwide, including The Capital Grille, Maggiano's Little Italy, Rodizio Brazilian Steakhouse, Cuba Libre Restaurant and Rum Bar, and Blue Martini, attracting 3.6M visits annually (Placer.ai 2025)



Pointe Orlando

9101 International Drive | Orlando, FL 32819

Orange County Orlando-Kissimmee-Sanford, FL 413,887 Sq Ft

28.4328, -81.4701



Available Spaces

| | | | | |
|----------|--------------|------|----------|------------------|
| 101 | 4,500 Sq Ft | | 230/230A | 10,184 Sq Ft |
| 106 | 12,854 Sq Ft | | 236-S1 | 381 Sq Ft |
| 106 | 12,893 Sq Ft | 360° | 300A | 2,484 Sq Ft 360° |
| 214 | 1,180 Sq Ft | 360° | 300B | 2,921 Sq Ft 360° |
| 218 | 500 Sq Ft | | 302 | 6,464 Sq Ft 360° |
| 220B | 2,346 Sq Ft | | 302A | 1,831 Sq Ft |
| 227/227A | 1,114 Sq Ft | 360° | 504 | 2,084 Sq Ft 360° |

Current Tenants

Space size listed in square feet

| | | | | | |
|-------|-------------------------------------|--------|------|-------------------------------|--------|
| 101 | Museum of Ice Cream | 4,700 | 500R | Maggiano's Little Italy | 16,400 |
| 108 | Sandbox VR | 5,275 | 502 | The Greens | 4,888 |
| 111 | Dick's Last Resort | 10,352 | 602 | The Hampton Social | 10,763 |
| 200 | Zukku San Sushi Bar & Grill | 5,484 | 604 | Taffer's Tavern | 3,561 |
| 202 | Activate Games | 10,000 | 606 | JoJo's Shake Bar | 4,471 |
| 212 | Game Show Battle Rooms | 3,417 | 608 | Rodizio Grill | 10,587 |
| 220A | Will To Escape | 5,376 | 701 | Museum of Ice Cream | 12,999 |
| 226 | Cigars to Go | 1,203 | 710 | Funny Bone | 14,359 |
| 236 | Blue Martini | 7,205 | 730 | Still Lounge by Dre and Snoop | 8,708 |
| 246 | Moondance Trading | 1,145 | 730A | Sal's Pizza | 646 |
| 248 | Moondance Trading | 1,347 | 740 | Sports & Social | 12,930 |
| 250 | Rocket Fizz Soda Pop and Candy Shop | 1,938 | 741A | PBR Cowboy Bar | 7,737 |
| 300C | Monkey Joe's | 17,250 | 742 | Taverna Opa | 5,500 |
| 326 | Palm Tree Club | 6,395 | 1012 | Main Event Entertainment | 48,341 |
| 326A | Palm Tree Club | 0 | A3 | The Capital Grille | 10,920 |
| 328/3 | Cuba Libre | 18,188 | BRX0 | Brixmor Regional Office | 6,140 |
| 30 | Restaurant/Rum Bar | | 1 | Office | |
| 332R | The Pub | 7,975 | E3A | Shark Bar | 4,041 |
| 334R | The Oceanaire Seafood Room | 8,500 | PAD1 | WonderWorks | 24,506 |
| | | | THTR | Regal Cinemas | 6,726 |

This site plan is for illustrative and information purposes only, showing the general layout of the shopping center; and is not a legal survey. Brixmor makes no representation or warranty that the shopping center is exactly as depicted as site conditions and tenant mix are subject to change over time.

1171

